

## Monthly Weather Summary in Thailand June 2016

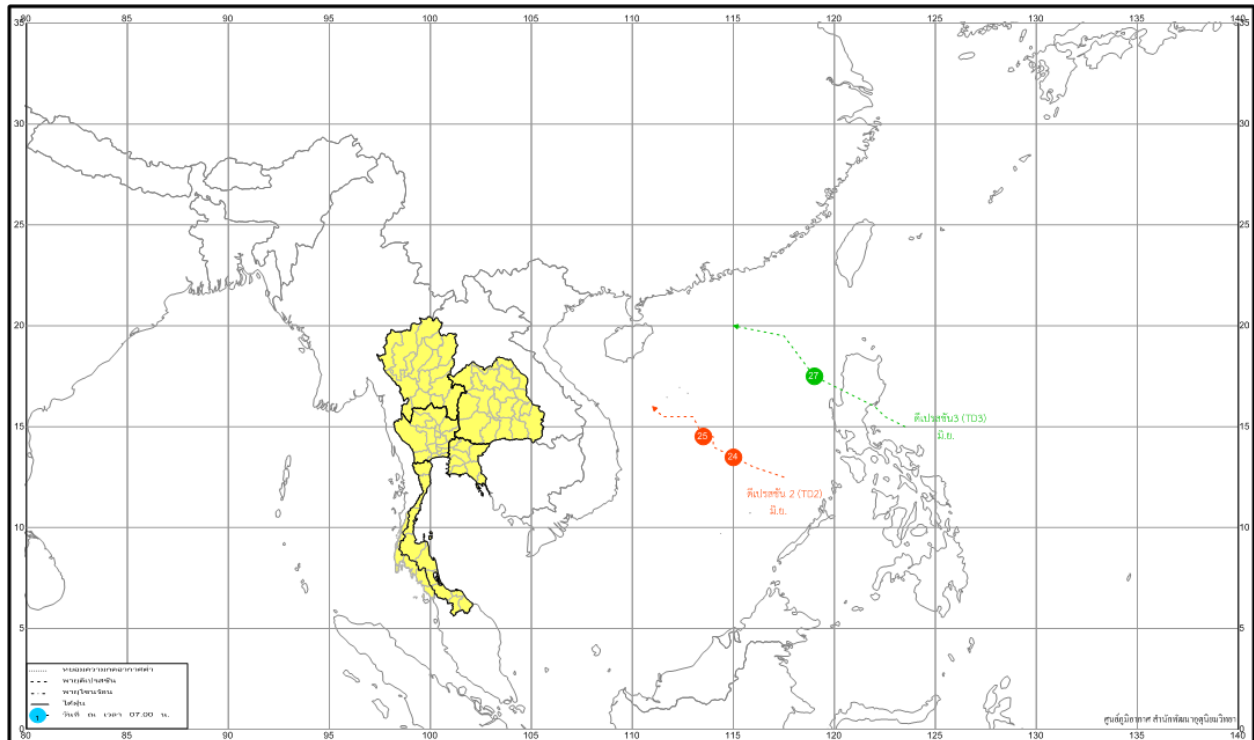
June 2016 was characterized by abundant rainfall nearly the whole month associated with the southwest monsoon prevailed over the Andaman Sea, Thailand and the Gulf of Thailand. The monthly rainfall was above the 1981-2000 normal in all parts i.e. northern part 51.9 mm (33%), northeastern part 55.6 mm (27%), central part 69.4 mm (48%), eastern part 94.5 mm (36%) southern part (east coast) 6.1 mm (5%) and southern part (west coast) 128.0 mm (41%). Overall, the monthly total rainfall was 249.7 mm, about 32 % above the normal however the accumulated rainfall for the first half of the year was 526.7 mm about 6% below normal. Moreover hot weather persist in most of upper Thailand during the first half of June, the monthly mean temperature was 28.8 degrees, 0.5 degrees higher than normal.

**1 - 10 June:** Under the influence of the southwest monsoon prevailed over the Andaman Sea, Southern Thailand and the Gulf of Thailand throughout the period and the southeasterly wind prevailed over lower northern, central and eastern parts of Thailand during early period associated with the low pressure cell covered the Gulf of Tonkin and upper Vietnam during the second half of the period. Scattered to fairly widespread rain occurred in upper Thailand almost the whole period with heavy to very heavy rainfall in some areas. The maximum daily rainfall was 118.4 mm at Amphoe Mueang in Mukdahan province on 7 June. Flash floods were reported at Chiang Mai province on 2 June and at Lampang province on 4 June. Floods were in some areas of Chonburi and Rayong provinces on 5 June. For southern Thailand, isolated to scattered almost the whole period with heavy rainfall in some areas and the highest rainfall amount of 88.8 mm was recorded at Amphoe Takua Pa in Phang-Nga province on 2 June.

**11 - 20 June:** The moderate southwest monsoon prevailed over the Andaman Sea and Thailand throughout the period. In addition, the southeasterly wind prevailed over northern, northeastern, eastern and central parts during mid-period and later weakened. These brought unevenly distribution of rainfall in this period such as northern part received scattered to fairly widespread rain almost the whole period with heavy to very heavy rainfall in some areas on the first day and the second half of the period while northeastern, central and eastern parts experienced isolated to scattered rain with heavy rainfall in some areas except for fairly widespread to widespread rain with heavy to very heavy rainfall in some areas during 15-17 June and 20 June. The maximum daily rainfall was 220.0 mm at Khlong Kalantan School, Khet Suan Luang in Bangkok on 17 June. Flash flood occurred at Tak province on 11 June. For southern part, isolated to scattered rain with heavy to very heavy rainfall in some areas occurred along the east coast except for fairly widespread to widespread rain with heavy to very heavy rainfall in some areas on 13 and 15-17 June. Fairly widespread to widespread rain with heavy to very heavy rainfall in some areas was in the west coast except for isolated to scattered rain on 11 and 18 – 19 June, the maximum daily rainfall of 132.2 mm was at Amphoe Takua Pa in Phang-Nga province on 13 June.

**21 - 31 June:** Affected by moderate to active southwest monsoon, the active low pressure cell covered northern and northeastern parts during late period associated with the indirect effected of tropical depression in the middle South China Sea during 23-26 June, the rainy conditions persisted with fairly widespread to widespread rain over upper Thailand and

heavy to very heavy rainfall in some areas almost the whole period, the maximum daily rainfall was 180.0 mm at Amphoe Lam Thamenchai in Nakhon Ratchasima province on 28 June. Flash floods occurred at Kalasin province on 27 June and at Tak, Phitsanulok and Nakhon Ratchasima provinces on 29 June and also at Chiang Mai province on 30 June. Land slide at Phetchabun province on 29 June. Southern Thailand received fairly widespread to widespread rain with heavy to very heavy rainfall mainly along east coast except for isolated to scattered rain with heavy rainfall in some areas during 24 – 26 June. The 150.0 mm highest rainfall amount was recorded at Ban Na San in Surat Thani provinces on 30 June. Flash flood occurred at Phang-Nga province on 29 June.



Tropical depression tracks in June 2016

**Note** : Rainfall, temperatures and natural disasters in this report were updated up to July 6, 2016

Climatological Center  
 Meteorological Development Bureau  
 Meteorological Department

Monthly Current Report  
Rainfall and Accumulative Rainfall  
June 2016

Northern Thailand

Station	Temperature ( °c)		Rainfall (mm)		Accumulative rainfall (mm) Since 1 January	
	Mean	Above or below normal	Actual	Above or below normal	Actual	Above or below normal
Chiang Rai	27.5	0.3	348.5	170.1	647.8	108.6
Mae Hong Son	28.0	0.4	224.7	34.2	354.8	-102.6
Phayao	27.9	0.3	121.6	18.8	313.5	-103.3
Chiang Mai	28.1	0.5	236.1	111.6	419.0	44.3
Tha Wang Pha	28.1	0.9	269.3	55.5	815.8	39.0
Nan	28.8	0.5	160.3	26.5	580.5	120.8
Lamphun	28.1	-0.1	277.2	153.0	490.2	145.9
Lampang	28.7	0.4	136.0	18.5	411.4	33.2
Mae Sariang	27.5	0.7	244.4	61.4	311.4	-100.8
Phrae	28.7	0.5	210.0	71.2	354.7	-86.5
Uttaradit	29.2	0.3	158.7	-47.7	324.4	-226.4
Bhumibol Dam	28.4	-0.1	136.9	30.4	268.2	-132.6
Tak	28.7	0.3	145.2	17.4	274.3	-108.9
Mae Sot	27.1	0.8	227.8	-27.6	355.6	-144.2
Umphang	25.7	0.7	300.2	112.7	452.8	-94.8
Phitsanulok	29.2	0.2	226.2	60.5	516.9	80.5
Lom Sak	28.7	0.5	225.0	88.8	497.3	81.4
Phetchabun	29.1	0.9	141.7	-20.0	349.3	-120.8
Wichian Buri	29.5	0.4	179.6	35.3	292.6	-170.6
Kamphaeng Phet	29.0	0.6	192.7	27.6	270.3	-195.2
Over the area	28.3	0.4	208.1	51.9 33%	415.0	-33.4 -7%

Northeastern Thailand

Station	Temperature ( °c)		Rainfall (mm)		Accumulative rainfall (mm) Since 1 January	
	Mean	Above or below normal	Actual	Above or below normal	Actual	Above or below normal
Nong Khai	29.2	1.0	286.1	23.8	825.0	189.0
Loei	28.1	0.3	267.0	107.4	547.4	24.2
Udon Thani	29.2	0.6	219.9	-9.1	686.1	106.5
Nakhon Phanom	28.7	0.9	385.9	-23.6	756.1	-105.7
Sakon Nakhon	28.8	0.7	342.3	75.5	524.7	-154.5
Mukdahan	29.4	1.1	293.2	59.8	427.3	-141.9
Khon Kaen	29.2	0.6	155.1	-6.5	390.1	-97.3
Kosum Phisai	29.9	0.9	233.8	56.0	586.7	88.1
Roi Et	29.5	0.8	197.0	-26.5	430.9	-118.6
Chaiyaphum	29.2	0.7	211.4	73.8	482.6	42.1
Ubon Ratchathani	28.9	0.5	523.9	283.7	834.2	250.7
Tha Tum	29.3	0.2	266.4	60.3	547.8	17.3
Surin	29.5	1.2	193.1	-11.6	383.0	-157.5
Nakhon Ratchasima	29.5	0.4	176.9	72.4	324.4	-67.8
Chok Chai	29.4	0.7	207.2	99.9	388.8	-5.1
Nang Rong	29.0	0.4	184.9	55.2	432.3	-17.8
Over the area	29.2	0.7	259.0	55.6 27%	535.5	-9.3 -2%

- NOTES : 1) Mean temperature is the average of daily dry-bulb temperature  
2) "T" is trace, rainfall amount less than 0.1 mm.  
3) "blank" is incomplete data.  
4) Temperature and rainfall are preliminary data.

Monthly Current Report  
Rainfall and Accumulative Rainfall  
June 2016

Central Thailand

Station	Temperature ( °c)		Rainfall (mm)		Accumulative rainfall (mm) Since 1 January	
	Mean	Above or below normal	Actual	Above or below normal	Actual	Above or below normal
Nakhon Sawan	30.0	0.6	106.9	-30.4	263.8	-137.2
Bua Chum	29.8	0.9	193.2	76.9	328.0	-67.5
Lop Buri	29.8	0.8	129.2	5.2	252.1	-145.2
Suphan Buri	30.1	0.9	184.9	90.5	389.0	101.7
Thong Pha Phum	27.5	0.4	194.7	-83.6	462.1	-213.7
Kanchanaburi	30.0	1.0	158.6	72.2	320.0	-40.7
Bangkok Airport	29.4	0.0	284.6	116.5	502.2	-22.8
Bangkok Metropolis	29.6	0.1	464.3	307.2	715.5	143.9
Over the area	29.5	0.6	214.6	69.4 48%	404.1	-47.7 -11%

Eastern Thailand

Station	Temperature ( °c)		Rainfall (mm)		Accumulative rainfall (mm) Since 1 January	
	Mean	Above or below normal	Actual	Above or below normal	Actual	Above or below normal
Prachin Buri	29.2	0.3	238.2	14.7	448.7	-197.2
Kabin Buri	28.5	0.1	173.6	-24.3	333.1	-241.3
Aranyaprathet	29.4	0.8	267.3	103.7	404.2	-98.8
Chon Buri	30.4	0.8	167.5	19.8	349.5	-119.3
Ko Sichang	29.8	0.5	149.5	24.1	285.2	-128.1
Pattaya	29.2	0.3	179.7	60.7	408.9	-5.6
Sattahip	29.1	-0.3	394.9	264.8	571.8	87.1
Rayong	29.3	-0.1	200.4	35.3	411.2	-161.6
Chanthaburi	28.4	0.5	704.4	191.8	1096.7	-60.6
Khlong Yai	27.7	0.3	1084.6	254.7	1957.7	277.2
Over the area	29.1	0.3	356.0	94.5 36%	626.7	-64.9 -9%

- NOTES :
- 1) Mean temperature is the average of daily dry-bulb temperature
  - 2) "T" is trace, rainfall amount less than 0.1 mm.
  - 3) "blank" is incomplete data.
  - 4) Temperature and rainfall are preliminary data.

Monthly Current Report  
Rainfall and Accumulative Rainfall  
June 2016

Southern Thailand, east coast

Station	Temperature ( °c)		Rainfall (mm)		Accumulative rainfall (mm) Since 1 January	
	Mean	Above or below normal	Actual	Above or below normal	Actual	Above or below normal
Phetchaburi	29.6	0.6	78.7	-13.3	149.2	-127.6
Hua Hin	29.4	0.4	116.6	37.7	178.8	-136.4
Prachuap Khiri Khan	28.9	0.5	110.3	24.1	329.4	-57.2
Chumphon	28.1	0.5	99.4	-67.8	392.0	-253.1
Surat Thani	27.9	0.3	69.3	-55.7	307.0	-142.5
Ko Samui	29.2	0.5	193.4	69.3	438.6	-145.9
Nakhon Si Thammarat	28.5	0.3	114.7	-2.6	392.1	-309.3
Songkhla	28.8	0.2	101.6	1.7	402.5	-75.2
Hat Yai Airport	28.1	0.4	34.0	-85.3	318.6	-220.3
Pattani Airport	28.3	0.4	121.1	11.7	404.8	-49.0
Narathiwat	28.3	0.4	271.2	148.0	772.5	161.7
Over the area	28.6	0.4	119.1	6.1 5%	371.4	-123.3 -25%

Southern Thailand, west coast

Station	Temperature ( °c)		Rainfall (mm)		Accumulative rainfall (mm) Since 1 January	
	Mean	Above or below normal	Actual	Above or below normal	Actual	Above or below normal
Ranong	27.3	0.0	616.3	-33.1	1392.5	2.7
Takua Pa	27.3	-0.5	911.8	487.6	1923.3	656.5
Phuket	28.1	-0.5	334.0	120.7	787.3	43.9
Phuket Airport	28.3	0.0	540.7	283.9	1446.5	590.5
Ko Lanta	28.4	-0.1	317.3	58.8	868.9	151.2
Trang Airport	27.9	0.5	254.1	53.0	783.1	88.1
Satun	28.3	0.5	110.0	-73.5	439.8	-372.0
Over the area	27.9	-0.1	440.6	128.2 41%	1091.6	165.8 18%

- NOTES :
- 1) Mean temperature is the average of daily dry-bulb temperature
  - 2) "T" is trace, rainfall amount less than 0.1 mm.
  - 3) "blank" is incomplete data.
  - 4) Temperature and rainfall are preliminary data.

**Monthly Current Report**

**June 2016**

Region	Station	Temperature (°c)		Rainfall (mm)		Accumulative rainfall (mm) Since 1 January	
		Mean	Above or below normal	Actual	Above or below normal	Actual	Above or below normal
North	Chiang Rai	27.5	0.3	348.5	170.1	647.8	108.6
	Mae Hong Son	28.0	0.4	224.7	34.2	354.8	-102.6
	Phayao	27.9	0.3	121.6	18.8	313.5	-103.3
	Chiang Mai	28.1	0.5	236.1	111.6	419.0	44.3
	Tha Wang Phue	28.6	0.7	269.3	95.9	643.1	134.7
	Nan	28.8	0.5	160.3	26.5	580.5	120.8
	Lamphun	28.1	-0.1	277.2	153.0	490.2	145.9
	Lampang	28.7	0.4	136.0	18.5	411.4	33.2
	Mae Sariang	27.5	0.7	244.4	61.4	311.4	-100.8
	Phrae	28.7	0.5	210.0	71.2	354.7	-86.5
	Uttaradit	29.2	0.3	158.7	-47.7	324.4	-226.4
	Bhumibol Dam	28.4	-0.1	136.9	30.4	268.2	-132.6
	Tak	28.7	0.3	145.2	17.4	274.3	-108.9
	Mae Sot	27.1	0.8	227.8	-27.6	355.6	-144.2
	Umphang	25.7	0.7	300.2	112.7	452.8	-94.8
	Phitsanulok	29.2	0.2	226.2	60.5	516.9	80.5
	Lom Sak	28.7	0.5	225.0	88.8	497.3	81.4
Phetchabun	29.1	0.9	141.7	-20.0	349.3	-120.8	
Wichian Buri	29.5	0.4	179.6	35.3	292.6	-170.6	
Kamphaeng Phet	29.0	0.6	192.7	27.6	270.3	-195.2	
Northeast	Nong Kha	29.2	1.0	286.1	23.8	825.0	189.0
	Loei	28.1	0.3	267.0	107.4	547.4	24.2
	Udon Thani	29.2	0.6	219.9	-9.1	686.1	106.5
	Nakhon Phanom	28.7	0.9	385.9	-23.6	756.1	-105.7
	Sakon Nakhon	28.8	0.7	342.3	75.5	524.7	-154.5
	Mukdahan	29.4	1.1	293.2	59.8	427.3	-141.9
	Khon Kaen	29.2	0.6	155.1	-6.5	390.1	-97.3
	Kosum Phisai	29.9	0.9	233.8	56.0	586.7	88.1
	Roi Et	29.5	0.8	197.0	-26.5	430.9	-118.6
	Chaiyaphum	29.2	0.7	211.4	73.8	482.6	42.1
	Ubon Ratchathani	28.9	0.5	523.9	283.7	834.2	250.7
	Tha Tum	29.3	0.2	266.4	60.3	547.8	17.3
	Surin	29.5	1.2	193.1	-11.6	383.0	-157.5
Nakhon Ratchasima	29.5	0.4	176.9	72.4	324.4	-67.8	
Chok Chai	29.4	0.7	207.2	99.9	388.8	-5.1	
Nang Rong	29.0	0.4	184.9	55.2	432.3	-17.8	
Central	Nakhon Sawar	30.0	0.6	106.9	-30.4	263.8	-137.2
	Bua Chum	29.8	0.9	193.2	76.9	328.0	-67.5
	Lop Buri	29.8	0.8	129.2	5.2	252.1	-145.2
	Suphan Buri	30.1	0.9	184.9	90.5	389.0	101.7
	Thong Pha Phum	27.5	0.4	194.7	-83.6	462.1	-213.7
	Kanchanaburi	30.0	1.0	158.6	72.2	320.0	-40.7
	Bangkok Airpor	29.4	0.0	284.6	116.5	502.2	-22.8
	Bangkok Metropolis	29.6	0.1	464.3	307.2	715.5	143.9
East	Prachin Buri	29.2	0.3	238.2	14.7	448.7	-197.2
	Kabin Buri	28.5	0.1	173.6	-24.3	333.1	-241.3
	Aranyaprathet	29.4	0.8	267.3	103.7	404.2	-98.8
	Chon Buri	30.4	0.8	167.5	19.8	349.5	-119.3
	Ko Sichang	29.8	0.5	149.5	24.1	285.2	-128.1
	Pattaya	29.2	0.3	179.7	60.7	408.9	-5.6
	Sattahip	29.1	-0.3	394.9	264.8	571.8	87.1
	Rayong	29.3	-0.1	200.4	35.3	411.2	-161.6
	Chanthaburi	28.4	0.5	704.4	191.8	1096.7	-60.6
	Khlung Yai	27.7	0.3	1084.6	254.7	1957.7	277.2
South (East Coast)	Phetchaburi	29.6	0.6	78.7	-13.3	149.2	-127.6
	Hua Hin	29.4	0.4	116.6	37.7	178.8	-136.4
	Prachuap Khiri Khan	28.9	0.5	110.3	24.1	329.4	-57.2
	Chumphon	28.1	0.5	99.4	-67.8	392.0	-253.1
	Surat Thani	27.9	0.3	69.3	-55.7	307.0	-142.5
	Ko Samui	29.2	0.5	193.4	69.3	438.6	-145.9
	Nakhon Si Thammarat	28.5	0.3	114.7	-2.6	392.1	-309.3
	Songkhla	28.8	0.2	101.6	1.7	402.5	-75.2
	Hat Yai Airpor	28.1	0.4	34.0	-85.3	318.6	-220.3
	Pattani Airpor	28.3	0.4	121.1	11.7	404.8	-49.0
Narathiwat	28.3	0.4	271.2	148.0	772.5	161.7	
South (West Coast)	Ranong	27.3	0.0	616.3	-33.1	1392.5	2.7
	Takua Pa	27.3	-0.5	911.8	487.6	1923.3	656.5
	Phuket	28.1	-0.5	334.0	120.7	787.3	43.9
	Phuket Airport	28.3	0.0	540.7	283.9	1446.5	590.5
	Ko Lanta	28.4	-0.1	317.3	58.8	868.9	151.2
	Trang Airpor	27.9	0.5	254.1	53.0	783.1	88.1
	Satun	28.3	0.5	110.0	-73.5	439.8	-372.0
	Over the area	28.8	0.5	249.7	61.0	526.7	-30.8
					32%		-6%

- NOTES :
- 1) Mean temperature is the average of daily dry-bulb temperature
  - 2) "T" is trace, rainfall amount less than 0.1 mm.
  - 3) "blank" is incomplete data.
  - 4) Temperature and rainfall are preliminary data.

